



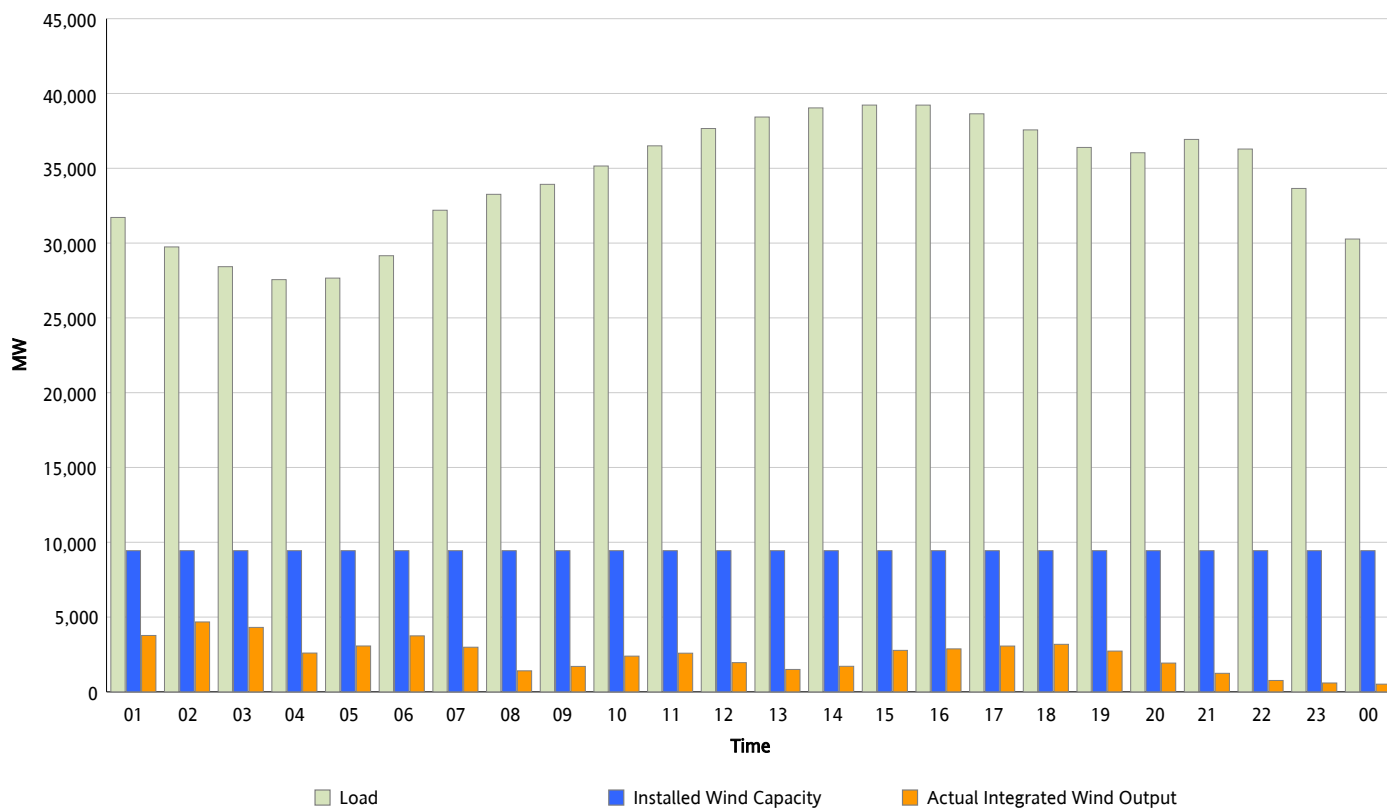
ERCOT Grid Operations

Wind Integration Report : 05/08/2012

Peak Load	39,226 MW
Load Peak Hour (HE)	15
Wind Over Peak	2,774 MW
Wind Record 04/13/12	7,925 MW
Max Wind Value*	5,043 MW
Wind Peak Time	01:55
Wind Integration %	17.35 %

Hourly Average Actual Load vs. Actual Wind Output

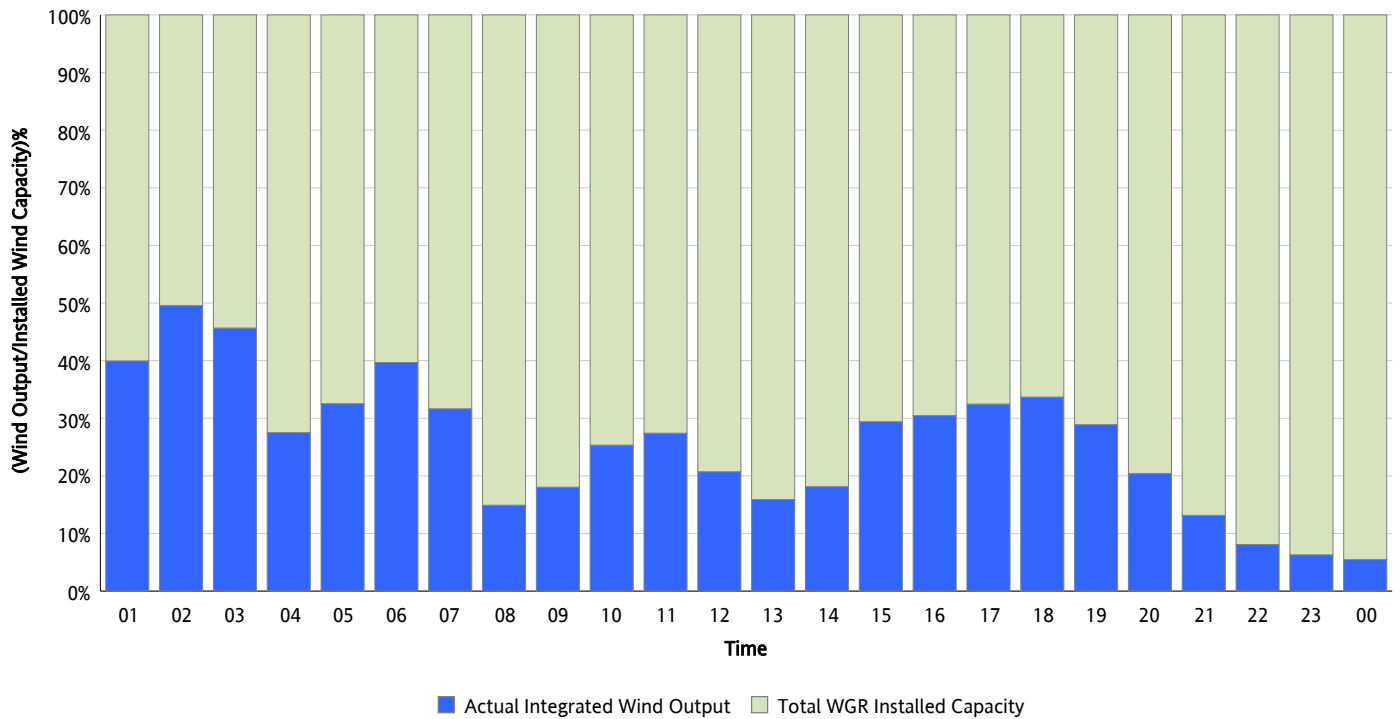
05/08/2012



* Wind Record and Wind Max represent instantaneous values and the rest of the values are integrated over the hour

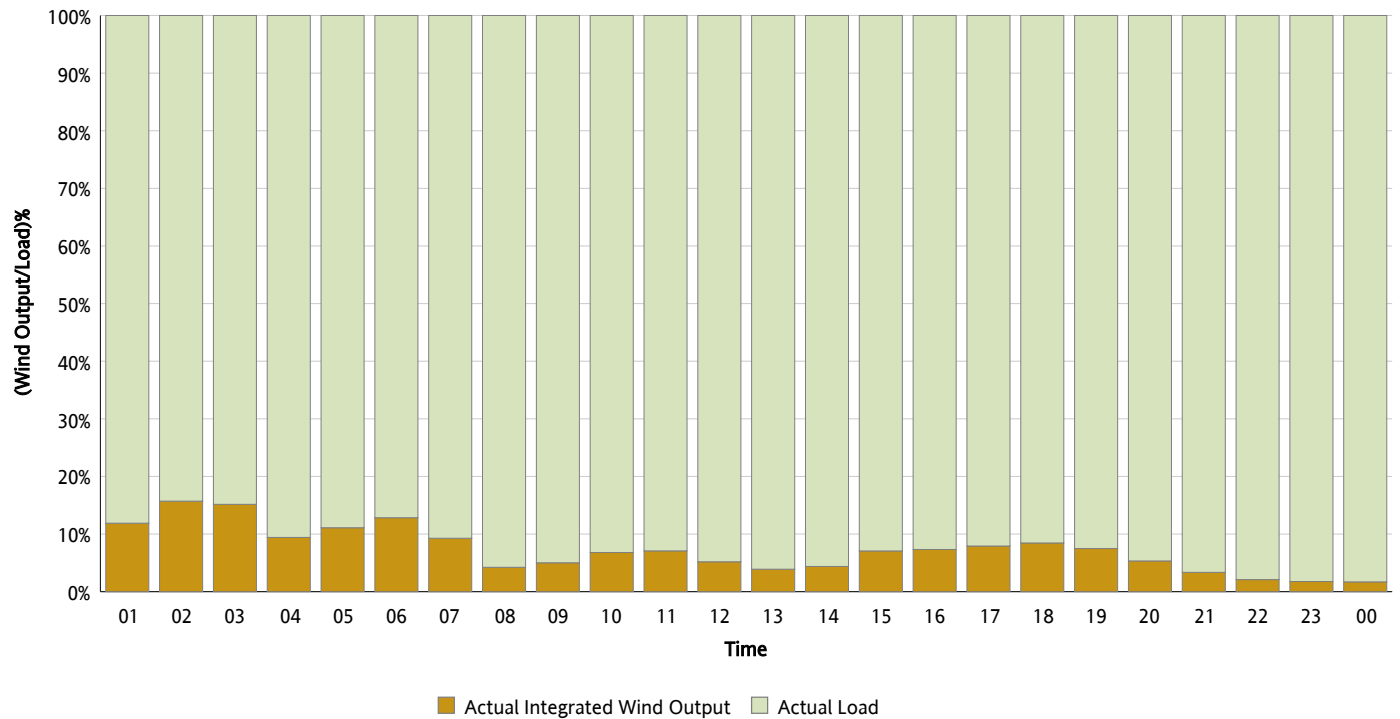
Actual Wind Output as a Percentage of the Total Installed Wind Capacity

05/08/2012



Actual Wind Output as a Percentage of the ERCOT Load

05/08/2012



ERCOT Load vs. Actual Wind Output

05/01/2012 - 05/08/2012

